



Indoor Localization and Logistic Systems

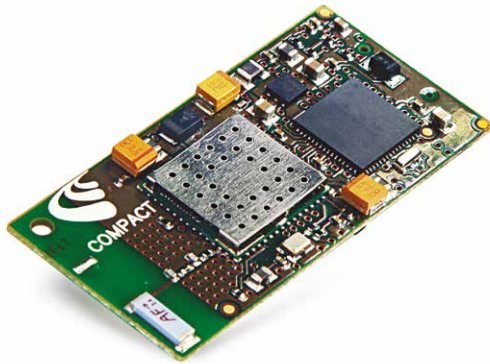
Wireless applications, such as tracking of goods and people, have changed the operations of department stores handling and logistics. These applications can provide benefits to both organization and economic.

A Wi-Fi-based solution can track any type of asset, or even people, without the need for an expensive and difficult-to-install proprietary network and without any additional hardware. Wiicom modules are designed to implement Wi-Fi RFID tags for location tracking of assets and people, indoor localization and goods monitoring.

Wi-Fi tags may be used from healthcare to industrial applications, to track assets and people, providing two-way communications.



Wi-Fi, Logistics in real time



FEATURES

- Long life battery
- Two configurable switches
- On board motion sensor
- Temperature industrial range (-40 to 85°C)
- Compact size (42mm x 23mm x 5mm)

BENEFITS

Long Battery Life

Tag has a single, replaceable battery that provides up to one year of battery life. The tag provides a report on its battery level for replacement

Call Buttons

Two optional buttons provides the capability to define alerts

Motion Sensing

The motion sensor can be configured to trigger alerts. It also enables different transmission intervals for tags when it is stationary or in motion – which reduces unnecessary network traffic and conserves battery life

TECHNOLOGY PROPOSAL

Wiicom Wi-Fi Tags are a small battery-powered wireless devices for locating and quasi-real time tracking of assets and people in any indoor environment.

Move tag is Wi-Fi compatible and offers some features including long battery life, movement sensor and two programmable buttons for alert.

Mobile equipment or goods

Tag can be attached to a variety of mobile equipment or goods. This enables to be located in real-time in the reference environment. In addition, the same tag can be used for acquire external sensors like environmental measures.

Reduce infrastructure costs

Tag-messages are received and processed by standard Wi-Fi infrastructure that permit to reduce infrastructure costs and keeping a installation simple.

Location determination is performed through a method that keeps a low impact of network and ensures a long battery life.

PRODUCT APPLICATION

Move-Tags are ideal for tracking of goods and equipments and for a broad range of applications and they can streamline business processes and improve operations and workflow.

Wiicom s.r.l.

Headquarter: I3P
C.so Castelfidardo, 30/A - 10129 Turin (ITALY)

t +39.0110905762
f +39.0110905126

mail info@wiicom.it
www.wiicom.it